

JEE Advanced Mock 1 Key Hints & Solution Links

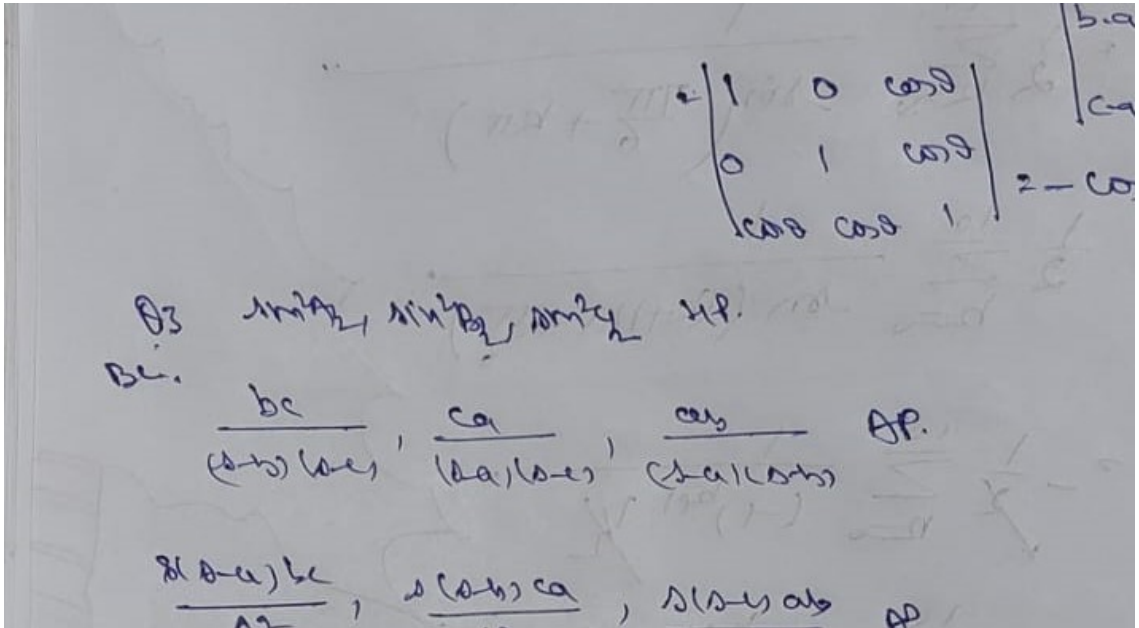
- | | | | | | |
|--------|---------|-------|-------|-------|-------|
| 1. ABD | 2. ABCD | 3. BC | | | |
| 4. C | 5. B | 6. C | 7. A | | |
| 8. 2 | 9. 1 | 10. 3 | 11. 5 | 12. 9 | 13. 3 |
| 14. A | 15. C | 16. B | 17. C | | |

(Q1) $f(x) = 12x^2 - 2x - 2 = 0$ $x = \frac{1}{2}, x = -\frac{1}{3}$
 minimum

ABD
 $f(\frac{1}{2}) = \frac{1}{2} - \frac{1}{4} - 2 = -\frac{7}{4}$ $f(0) = -2$

$g(x) = \begin{cases} f(x) \\ \frac{1}{4} \\ 3 \rightarrow \end{cases}$

(Q2) $\vec{c} \cdot \vec{a} = \alpha = \cos \theta$ $\vec{c} \cdot \vec{b} = \beta = \cos \theta$
 ABCD
 $(\vec{a} \times \vec{b}) \cdot \vec{c} = \gamma = |\vec{a} \times \vec{b}|^2$ $\gamma^2 = [\vec{a} \ \vec{b} \ \vec{c}]^2 = \begin{vmatrix} a_1 & a_2 & a_3 \\ b_1 & b_2 & b_3 \\ c_1 & c_2 & c_3 \end{vmatrix}^2$



- Q4. https://youtu.be/7oRGhA_EAug
- Q5. https://youtu.be/RLGmAugi_0o
- Q6. <https://youtu.be/T-RXV4mhS-k>
- Q7. <https://youtu.be/WChDOo3jfhw>
- Q8. <https://youtu.be/yGTDIi4ZCME>
- Q9. <https://youtu.be/X0gkgOdIlew>
- Q10. <https://youtu.be/wpNWDhLcKxk>
- Q11. <https://youtu.be/a0jTAMMZemw>
- Q12. <https://youtu.be/cwGUFtJhIM>
- Q13. <https://youtu.be/5IBDivhpDjA> Timestamp 00:03:50
- Q14-15. <https://youtu.be/yahrTUy987U>
- Q16-17. <https://youtu.be/Gm3ilAiDcls>